



COLUMBUS DAY SAVINGS

EST. 1902
VOLPI
AMERICAN CRAFTED



Prosciutto Boneless
[31550]
1/12#
per lbs



Genova Salami
[31530]
5/5#
per lbs



Tuna Wild in Water (12/5.6oz) **per cs**
[35147]

Tuna Wild in Water (8/3pk 2.82oz) **per cs**
[35149]



Cannoli



Cannoli Pie (1/3ct) **per cs**
[85030]

Cannoli Snack Pack (1/12 ct) **per cs**
[85031]

Cannoli Pushup Pop (1/12ct) **per cs**
[85032]

NEW



Mortadella



Mortadella (2/8#) [31246]

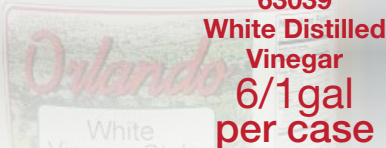
Mortadella W/Pistachio (2/8#) [31248]

Mortadella 1/2 Cut (2/5#) [31247]

Mortadella W/Pist. 1/2 Cut (2/5#) [31249]

ALL per lbs

Orlando



63039
White Distilled Vinegar
6/1gal
per case

per case by the pallet



Cookies from Italy



ALL per case

Risofrole (12/700gm) [90147]

Bastoncini (12/700gm) [90150]

Cruschelle (12/700gm) [90155]

Pastefrolle (12/700gm) [90165]

Ciambelle (12/700gm) [90166]

Zuppole (12/700gm) [90168]



15036
Provolone Salami
1/60#
per lbs

Giannotti

Premium Pasta Sauces

Marinara Sauce [61095]

Marinara Arrabbiata [61096]

Marinara Vodka [61097]

Marinara Sauce w/ Meat [61099]

Marinara Sauce w/ Cheese [61100]



ALL 12/26oz per case

LA DOLCE VITA NEW
Italian Drinks

6x4pk/11.1oz

92400 Blood Orange

92402 Aranciata

92404 Limonata

92410 Chinotto

per case

4x6pk/100ml

92415 Bitter Red

92416 Bitter Blond

per case

Delivery Dates: September 23 - October 11, 2024

191 Tubeway Drive Carol Stream, Illinois 630-221-1001



COLUMBUS DAY SAVINGS



Capicola



Capicola Hot
[31640]

Capicola Mild
[31641]

BOTH
2/6#
per lbs



Artichokes



Marianted Artichokes (12/6.5oz) **per case**
[46030]

Marianted Artichokes (12/14.75oz) **per case**
[46031]



TORINO. ITALIA. 1895

Crema Gusto Espresso Coffee

84230
20/250gm
per case

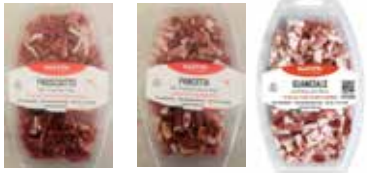


MAESTRI

AUTHENTIC ITALIAN SALUMI

Meats

NEW



Prosciutto Strips [31025] (10/3.5oz) per cs

Pancetta Strips [31026] (10/3.5oz) per cs

Guanciale Strips [31027] (10/3oz) per cs



46056
Roasted Red
Peppers
12/12oz
per case

46070
Fried Peppers
12/12oz
per case



Chocolate Bars



Milk [80160]

Espresso Bars [80165]

Milk/Almonds [80185]

Dark [80190]

Dark/Almond [80200]

Milk/Hazelnut [80222]

Dark Bar Orangello [80227]

Bittersweet Bars [80225]

Bittersweet Dark Bars [80226]

Dark/Amaretto [80210]

ALL
12/3oz
per case



Pepper Shooters



31285
Pepper
Shooter Deli
6/14oz
per case

31250
Pepper
Shooter
2/1gal
per case

MONTALI

Tomato Paste Tube



61085
Tomato
Paste Tube
12/4.5oz
per case



Mini Croissants



41380
10/12.3oz
per case

Delivery Dates: September 23 - October 11, 2024

191 Tubeway Drive Carol Stream, Illinois 630-221-1001



COLUMBUS DAY SAVINGS



- 10429** Asiago Wheel (1/24#) **per lb**
- 10432** Parmesan Wheel (1/24#) **per lb**
- 10442** Romano Wheel (1/24#) **per lb**
- 10451** Gorgonzola Wheel Foil (1/8#) **per lb**
- 10452** Blue Cheese Wheel Foil (2/8#) **per lb**

COLAVITA Gluten Free Pasta

- Spaghetti Gluten Free [72250]
- Linguini Gluten Free [72251]
- Penne Rigate Gluten Free [72252]
- Fusilli Gluten Free [72253]



**ALL
12/12oz
per case**



- Bomba Pepper Spread (12/280gm) **per cs** [42150]
- Calabrese Pesto Spread (12/180gm) **per cs** [42151]
- Calabrese Garlic Spread (12/180gm) **per cs** [42152]
- Peppers Whole in Oil (12/280gm) **per cs** [47300]
- Peppers Crushed in Oil (12/280gm) **per cs** [47301]
- Peppers Sliced in Oil (12/280gm) **per cs** [47302]



Pancetta



- Mild Pancetta (4/2.5#) [31665]
 - Hot Pancetta (4/2.5#) [31666]
- BOTH
per lbs**



Balsamic Vinegar Aged 8 Years



**63170
12/250ml
per case**



Ladyfingers [90080]



**10/500gm
per case**



- Fruitti di Mare (Seafood Salad) (2/5kg Pails) [35299] **per case**
- Polpo (Octopus Salad) (1/22#) [35305] **per case**



**44056
Flour
8/5#
per case**

**44055
Flour
2/25#
per case**



**92204
24/0.25Lt
per case**

Delivery Dates: September 23 - October 11, 2024

191 Tubeway Drive Carol Stream, Illinois 630-221-1001



SAUCES

61300	Traditional Sauce	8/24oz	per cs
61301	Tomato & Basil Sauce	8/24oz	per cs
61302	Mariana Sauce	8/24oz	per cs
61303	Roasted Garlic Sauce	8/24oz	per cs
61304	Fire Roasted Tomato Sauce	8/24oz	per cs

MINI CUTS

74944	Farfalle Mini Piccolini	12/1#	per cs
74946	Wheels Mini Piccolini	12/1#	per cs
74947	Penne Mini Piccolini	12/1#	per cs

TRI-COLOR

74381	Tri Color Rotini	16/12oz	per cs
74787	Tri Color Penne	16/12oz	per cs

WHOLE GRAIN

74517	Spaghetti Whole Grain	20/1#	per cs
74520	Linguine Whole Grain	20/1#	per cs
74664	Thin Spaghetti Whole Grain	20/16oz	per cs
74522	Penne Whole Grain	12/1#	per cs
74663	Rotini Whole Grain	12/1#	per cs

GLUTEN FREE

74700	Spaghetti Gluten Free	12/12oz	per cs
74705	Penne Gluten Free	8/12oz	per cs
74710	Rotini Gluten Free	8/12oz	per cs
74715	Elbows Gluten Free	8/12oz	per cs

LONG CUTS

74001	Capellini	20/1#	per cs
74003	Thin Spaghetti	20/1#	per cs
74005	Spaghetti	20/1#	per cs
74006	Fettuccine	20/1#	per cs
74007	Thick Spaghetti	20/1#	per cs
74011	Linguine Fini	20/1#	per cs
74013	Linguine	20/1#	per cs
74304	Spaghetti Rigati	20/1#	per cs

SOUP CUTS

74026	Orzo	16/1#	per cs
74038	Spaghetti Tagliati	16/1#	per cs
74041	Elbows	16/1#	per cs
74045	Ditalini	16/1#	per cs
74090	Gemelli	16/1#	per cs
74318	Pastina	16/12oz	per cs

REGULAR CUTS

74065	Farfelle	12/1#	per cs
74071	Mostacioli	12/1#	per cs
74072	Penne Rigate	12/1#	per cs
74074	Cut Ziti	12/1#	per cs
74081	Rotini	12/1#	per cs
74083	Rigatoni	12/1#	per cs
74093	Large Shelles	12/1#	per cs
74097	Cellentani	12/1#	per cs
74099	Campanelle	12/1#	per cs
74389	Mezze Rigatoni	12/1#	per cs
74393	Medium Shells	12/1#	per cs

BARILLA CLASSIC
SPAGHETTI

DAL 1877
Barilla®

CAREFULLY SELECTED
PREMIUM DURUM WHEAT

AL DENTE PERFECTION IN 10-11 MINUTES

